

N.E.W.S. LETTER

Volume 34

March 2025

Next Meeting: March 22, 2025

Issue 2

In This Issue

Treasurer's Report and Minutes from the last NEWS meeting	page 2
Officers. Weekly Calendar Pack Rats NearFest	page 3
Led Communication W1VLF	page 4
48 Eastern VHF/UHF Conference	page 5-8
TOM KIRBY MEMORIAL AWARD For Sale	page 9-10
Technical Excellence A ward	page 11
NanoVNA & Tiny SA Remote Control via Wi-Fi	page 12-18
Tip of the Month	page 19
Alternatives to using a web browser for Ping Jockey & ON4KST	page 20-24
Getting On 222 MHz (antenna)	page 25-27
Supporters	page 28
Application	page 29

GENERAL MEETING - STORRS LIBRARY -

1 PM to approximately 3:45 PM.

693 Longmeadow St, Longmeadow, MA 01106

<https://www.longmeadowlibrary.org/>

BOARD MEETING -(Lunch- All are Welcome) 11:00 AM at Lulu's, 151 Hazard Ave. Enfield, CT
Phone: (860) 763-2377 I-91 Exit 47 Rt. 190E 1 Mile on Left <http://luluspizzeria.com>

DON'T FORGET

**The North East Weak Signal Group 2 Meter Net
Every Thursday at 8:30 PM local 144.250 MHz**

MEMBERSHIP in the N.E.W.S Group is \$10 per 2 years.

Apply to George Collins, KC1V. E-mail: news.kc1v@gmail.com.

You may download an application from our web page: <http://www.newsvhf.com>

The N.E.W.S. LETTER is the publication of the North East Weak Signal Group.
Articles may be reprinted with proper credit given to the author and the N.E.W.S. LETTER.

REMINDER: 222 MHz Activity Night Tuesdays 7 to 11 PM

Wed Nights 8:30 pm - 432MHz K1FMS (N1DPM) +

8:00 - 432.100 8:30 - 432.150 MHz

.....
Called to order by President W2AAU 1312

Treasurer Report In NEWSletter

OLD BUSINESS

K1MAP - Conference Registration coming soon

Question - can W1LE report on any progress on club beacon?

WA1MBA - Stan still working with Blue Hill site.

Request status report for next meeting

NEW BUSINESS

No meeting of Digital committee yet

ANNOUNCEMENTS

Hamcation VHF+ gathering at flea market

SHOW & TELL

W1GHZ - prototypes of 10 GHz and 5760

Preamp

K1MAP - Quansheng walkie varieties

Can be used for simple low-power beacon

K2AEP - TQP Preamp from ebay

Adjourn 135

.....
Treasurer's Report January 2025

Balance, Last Report 11-23-2024: \$2896.69

Income: None:

Expenses:

Library Room Rental: **\$300.00**

Current Balance 11-23-2024: \$2596.69

Current Paid Members:

We had no renewals during this reporting periods.

The membership totals are:

98 Regular

3 Life

11 Permanent

1 Courtesy

Submitted January 4, 2025

George Collins, KC1V

Treasurer, North East Weak Signal Group

Weekly Calendar

Mon. Packrats Nets start at 7:30pm on 6 meters, 8 pm on 144.150, etc. Philadelphia area.
Tues. Mud Toads Net FM 17, Virginia 8 pm 144.250
Tues. Activity Night 7:00pm 222.100 K1WHS +
Weds Activity Night 8:30pm 432 150 K1FMS (N1DPM) +
Thurs. NEWS net, 8:30pm 144.250
Sat. Chesapeake Net 144.205 W3BFC FM28 9 pm
144.205 Mornings 8:30-9:30 AM -- 144.205 , 144.190, ME, Canada to NC and out to OH, WV

Officers:

President Dick Frey, W2AAU, Delanson, NY
Vice Pres. Eric Mazur, KA1SUN, Savoy, MA
Treasurer George Collins, KC1V, Somers, CT
Secretary Paul Wade, W1GHZ, Cabot, VT

Board Of Directors:

Tom Cefalo W1EX N Reading MA
Tom Williams WA1MBA Orleans, MA
Bob Bownes KI2L, Troy, NY
Mark Casey K1MAP, Hampden, MA

NEWSLetter Editor Don Twombly W1FKF, Loudon, NH

[March News Letter](#)

Mt. AIRY V.H.F. RADIO CLUB, INC.

CHEESE BITS

The Southeastern VHF Society will hold it's 2025 Annual Conference on Friday April 4th through Saturday April 5th at the Quality Inn in Clarksville, Tennessee. Clarksville is located about 45 miles north of Nashville TN which is the hub for Country Music and Entertainment



EME Conference 2026 will be held May 28th-31st, 2026 in Puerto de la Cruz,

Tenerife, Canary Islands

The conference will take place at the "*Hotel Botánico & The Oriental Spa Garden*" (5 Stars Hotel)

<https://eme2026.moonbounce.info/eme2026.html>

Next NEWS Meeting March 22, 2025

Paul W1VLF

LED - Communication

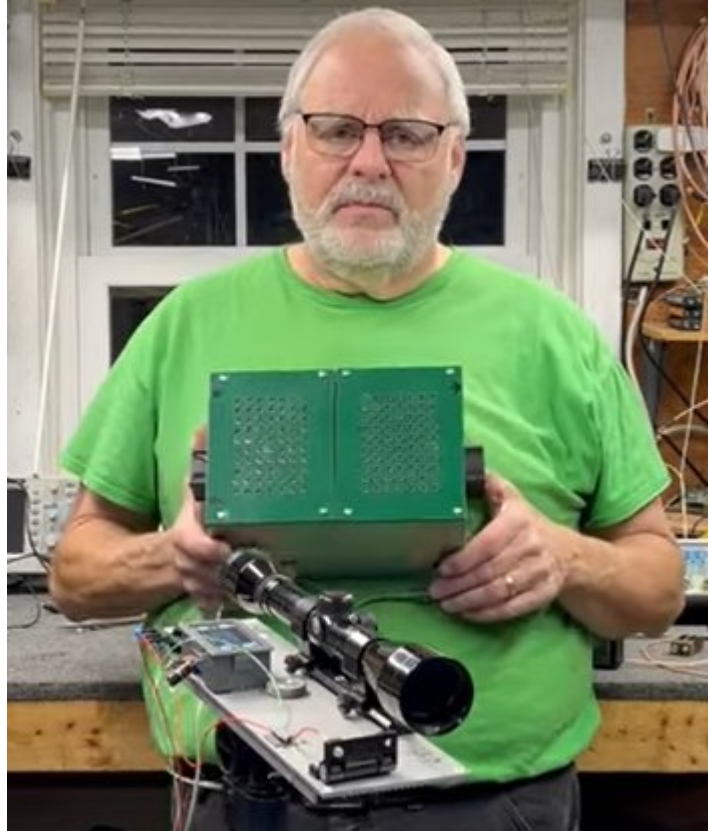
Hello From W1VLF, I am just a guy who has many interests and has done lots of diverse and weird experiments mostly in the electronics area. Such as Laser light and LED light line of sight and non line of sight communications, machine shop activities etc.

I will bring and demonstrate equipment that can be used for optical QSO's including the transmitters and rx's and their component parts. Using LEDs, not lasers. This equipment operates in the 940 Nano meter band which humans cannot see. Included will be a demo of the equipment using both CW and digital Q65 mode.

A single LED is capable of greater than 2 mile CW QSO using this equipment. All equipment is solid-state, not photomultiplier tubes, and low voltage operating from battery supplies.

Hopefully there will be some interest and a lot of questions."

[YouTube W1VLF](#)





48th EASTERN VHF/UHF/MICROWAVE CONFERENCE:

May 9-11, 2025

**Hilton Garden Inn (860)-688-6400
555 Corporate Drive, Windsor, CT 06095
(I91 exit 38 to Day Hill Rd.)**

Registration

5/8/25 THURSDAY Early Arrivers

6-9pm Meet in bar

5/9/245 FRIDAY LODGING

12 Noon Early Arrivers Lunch - meet K1MAP (413-222-9292) in Lobby

2:00-5PM Afternoon Workshop

6:00pm-?? SOCIAL ROOM (BYOB due to Hotel rules)

6:00pm Dinner (on your own)

7:30pm Indoor SWAP/SELL & VENDORS.

5/10/25 SATURDAY REGISTRATION, TALKS, AUCTIONS, TEST LAB , VENDORS & MORE.

Preliminary SCHEDULE DETAILS

7:30am REGISTRATION BEGINS

8:15 am OPENING ANNOUNCEMENTS

8:30am TALKS BEGIN (see SCHEDULE):

11:30pm LUNCH (Grinders at Jim's Restaurant - Register \$20)

1:15pm TALKS RESUME

4:15pm TALKS CONCLUDE

5:00pm NEWS MEETING - W2AAU

5:30pm Pre-Banquet Social Room (BYOB due to Hotel rules)

7:00pm BANQUET (7 PM - 8:30 PM)

8:50pm Tom Kirby Award Presentation

8:55pm Sam Harris Memorial Quiz

9:00pm DOOR PRIZE EXTRAVAGANZA Michele Clement W1MKY, Lanette KA1NKD, and Don Twombly W1FKF

Super Test Lab up to 122 GHz

5/11/25 SUNDAY

**9:00am-11am VHF+MW SWAP/SELL at Vintage Radio & Communications Museum
115 Pearson Lane, Windsor, CT *FREE***

**(included with Registration- Please contact Mark Casey
K1MAP for Vendor Info 413.222.9292)**

EVERY REGISTRANT IS ELIGIBLE FOR PRIZE DRAWINGS.

DIRECTIONS & RESERVATIONS

Hilton Garden Inn at Bradley Airport, Windsor, CT
+1 860-688-6400

The conference rate for Thursday, Friday, Saturday and Sunday night is \$149 per night which includes breakfast for two.

Available rooms are King or two doubles.

We encourage everyone to register for the hotel as early as possible.

The hotel direct link is:

[Hilton Garden Inn at Bradley Airport, Windsor, CT](#)

The hotel address is 555 Corporate Drive, Windsor, CT 06095
A complementary shuttle is available from Bradley Airport

+1 860-688-6400

Questions? Contact one of the 2 Conference Co-chairmen:

Paul Wade, W1GHZ, (presentations, proceedings)

Mark Casey, K1MAP, (hospitality, hotel, swaps/vendors)

cell 413-777-9828, home 413-566-2445.

[Email W1GHZ](#) [Email K1MAP](#)

Door Prize Donations Welcome

Door Prize Coordinators:

**Michele Clement W1MKY, Lanette Twombly KA1NKD,
and Don Twombly W1FKF**

SHIP DOOR PRIZES TO:

**Don Twombly, W1FKF
32 Bumfagon Rd.
London, NH 03307**

Email W1FKF Email W1MKY

SWAP n SELL INFO:

**MARK CASEY, K1MAP
303 Main Street
Hampden, Mass 01036
(413) 566-2445 (home) or 413-222-9292 (cell)**

Email K1MAP

* Sponsored by the North East Weak Signal Group

* ARRL-Affiliated

Official Web page: <http://www.newsvhf.com>

For Eastern VHF/UHF Conference latest news updates and Registration forms.

It's time for nominations!

KIRBY AWARD

EASTERN VHF/UHF CONFERENCE

Following the passing of Tom Kirby -W1EJ just prior to the 1996 meeting of the 22nd Eastern VHF/UHF Conference it was unanimously decided upon to establish the TOM KIRBY MEMORIAL AWARD as a remembrance of Tom's dedication and love for life, the conference and amateur radio in general. This memorial award will be presented annually at the Conference Banquet to a licensed radio amateur who embraces those qualities exhibited in Tom's life. Nominees, along with background supporting material may be presented to a committee which will select each years honoree.

Basic criteria that a candidate would have to meet to be eligible for the award are as follows:

1. The candidate must be a licensed radio amateur.
2. This candidates amateur's known primary interest is VHF / UHF and above.
3. The potential candidate must have or continue to positively promote this aspect of the hobby through:
 - Helping to promote activity on the amateur bands above 50MHz.
 - Creating and or maintaining organizations dedicated to VHF and above activity.This could include WWW/reflector sites, conference activities, club involvement, newsletters, etc.
 - Technical expertise and assistance shared with other VHF'ers.
 - Energetic hard work in helping newcomers to the VHF community.
4. The potential candidate must also balance his helping hand with actual operating activity.

This in itself will promote the evolution of VHF/UHF growth.

Supporting materials may be sent to Paul, W1GHZ at [Email W1GHZ](mailto:W1GHZ@arrl.org)

Past recipients of the Kirby award
of the Eastern VHF/UHF Conference were:

Year	Call	Recipient
1997	W1HQT	Bill Olson (K1DY)
1998	W1JR	Joe Reisert
1999	K2RIW	Richard Knadle (sk)
2000	W3RJW	Ron Whitsel
2001	W1GHZ	Paul Wade
2002	G3WDG	Charles Suckling
2003	W2PED	Paul Drexler
2005	W3IY	Bill Seabreeze (sk)
2006	W1RIL	Ken Schofield (sk)
2011	WZ1V	Ron Klimas
2012	N2LIV	Bruce Wood (sk)
2012	K1FO	Steve Powlishen (sk)
2013	W1COT	Bob Leiper (sk)
2014	WA2AAU	Dick Frey (W2AAU)
2017	WA1MBA	Tom Williams
2023	K1WHS	Dave Olean
2024	W1FKF	Don Twombly

In lieu of a plaque in 2012, Bruce Wood & Steve Powlishen were each honored with a Memorial Brick on the Diamond Terrace at W1AW.

for sale...

Mirage A1015G 6 Meter Amplifier 10w in 150+w out with a preamp. In good working and physical condition. Includes manual. \$250 or BRO. Can bring to next NEWS meeting, or other arrangements can be made. Contact Fred K1FMS at n1dpmfred@gmail.com

7 Rohn 25 tower sections available for sale.
Never installed. Excellent condition. \$125 each. Available for pickup here at W1ZC Mason, NH
w1zc@myfairpoint.net

Paul Wade, W1GHZ, Awarded Doug Demaw Technical Excellence Award at Ham-Con

February 26, 2025 by [Phil Temples](#)

ARRL New England Division Director Tom Frenaye, K1KI, presented the 2024 ARRL Doug Demaw, W1FB, Technical Excellence Award to Paul Wade, W1GHZ, at the Vermont State Convention ("Ham-Con") on February 21, 2025 in Colchester VT



WHEREAS, the ARRL panel of Technical Advisors voted to award the 2024 Doug DeMaw, W1FB Technical Excellence award to Paul Wade W1GHZ for his July/August 2024 QEX

article, "Great Noise Figure, But Still Can't Hear".

THEREFORE, the ARRL Board of Directors does hereby bestow the 2024 Doug DeMaw,

W1FB Technical Excellence award to Paul Wade W1GHZ for his July/August QEX article,

"Great Noise Figure, But Still Can't Hear"

NanoVNA & Tiny SA Remote Control via Wi-Fi

Mike Seguin, N1JEZ

n1jez73@gmail.com

Have you ever wished you could run your NanoVNA, NanoVNA-H 4 or TinySA Ultra remotely so you didn't have to lug around a laptop hooked to either to control them? I realize that you can do everything from their touch screens, but I find the text to be really small for these tired old eyes. Then there is the issue of sunlight washing out the screen of the Nano/Tiny SA and Laptop if you are outside.

Well, there is a solution using an Android Cell Phone.

It's possible to use an OTG (on the go) cable to go between your Android Cell Phone and the Nano/Tiny SA. My OTG cable uses a USB C on both ends. To go one step further, you can use an old retired Cell Phone with no SIM card as long as it has WiFi capability and is not too under powered. I have used both with my current Samsung A-13 5G and an older/retired Samsung A-10e. The A-10e was under powered for use with the TinySA, but worked OK with my Nano and NanoVNA-H 4. Try it and see.

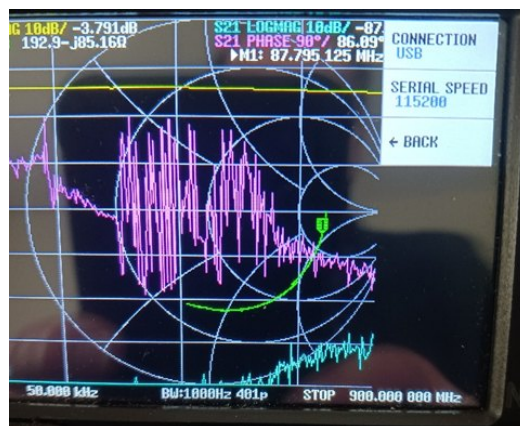
So, let's get started. Besides having an OTG cable, there are two pieces of software needed. The first is NanoVNA-App which is used on your PC. The current version is 1.1.218 available here:

<https://github.com/DiSlord/NanoVNA-App/blob/main/Win32/Release/NanoVNA-App.exe>

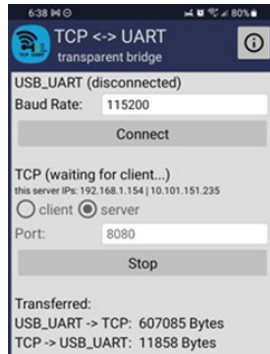
There is no installer for NanoVNA-App. Just create a folder on your C: drive. Copy the .exe file there. Don't put it in your Programs or Programs(x86) folders. NanoVNA-App will create folders and files as necessary.

Next is TCPUART for your Cell Phone. It is available for free (Hams like free) at the Android Play Store. Download and install.

Next, the Nano/TinySA 'Connection' setting should be set to USB in the upper right corner as is shown below. It is under 'config' in both the Nano and Tiny SA.



Let's start TCPUART. Here it is running on my Cell Phone.



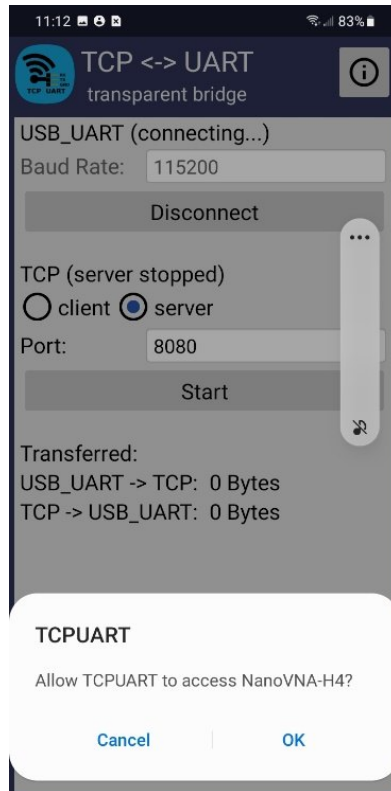
Essentially, TCPUART connects to the Nano/Tiny SA via USB. It then magically encapsulates the data so it can be sent via TCP/IP out the WiFi server in TCPUART.

In my case, the WiFi connection that the Cell Phone makes is to my home network. It can be whatever you set up in your Cell Phone for WiFi. TCPUART is given an IP address via DHCP from your network.

Next, connect the OTG cable between your phone and the Nano/Tiny SA.

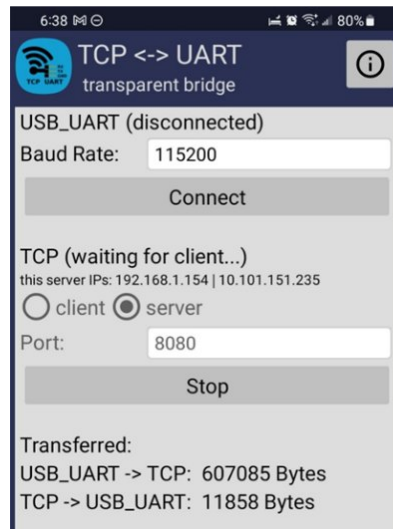


To continue setting up TCPUART, make sure the baud rate is 115200 and press 'Connect'. The label will change to 'Disconnect' which actually means you are connected. Your Cell Phone will likely ask you if you want to give TCPUART the right to rummage around in your phone so it can find a device. Answer 'OK'.



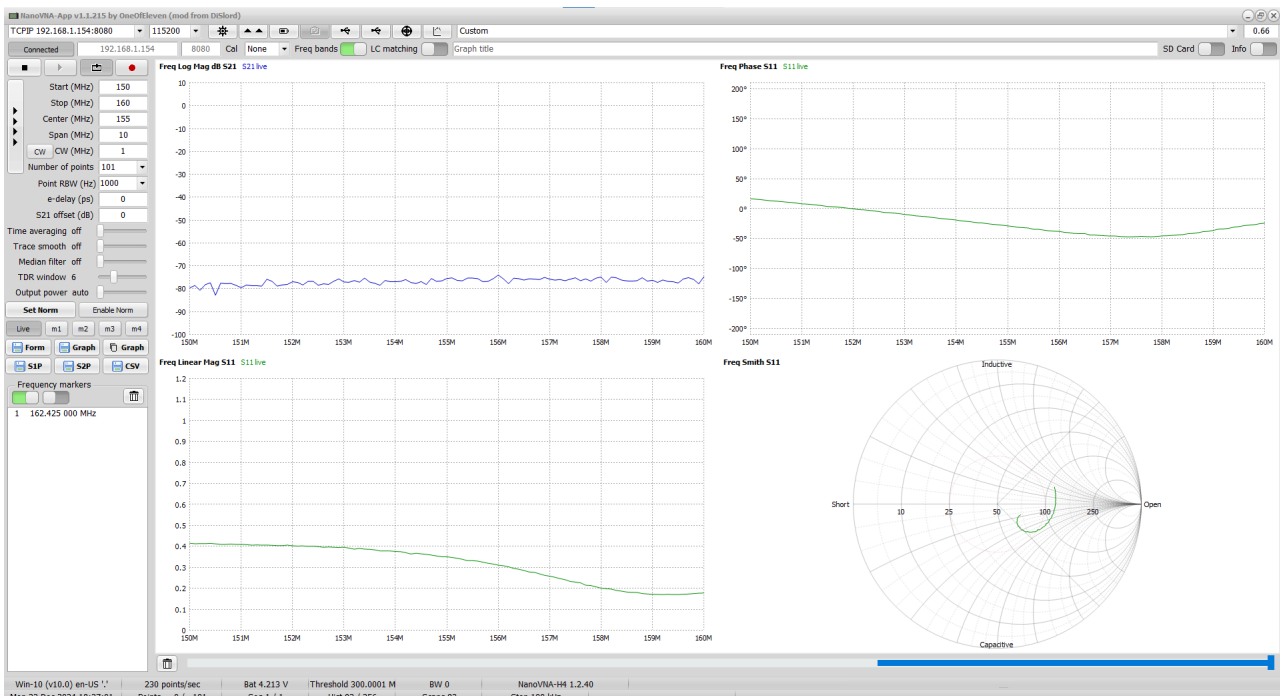
Next, for the TCP part, select 'Server' and check that the port is set to 8080 then press 'Start'. The label will change to 'Stop' which means you are connected.

Look at the screen to get the IP address that your home network has assigned. You can see the server IP address is 192.168.1.154 and a port number of 8080. Remember these numbers as there will be a quiz later.

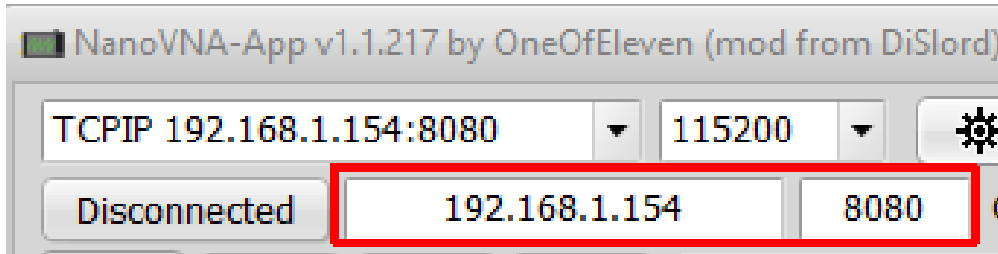


The next piece is the NanoVNA-App on your computer. As I said, there is no installer for the software, so you'll have to make your own shortcut to launch it if you want. The software looks like this for the VNA

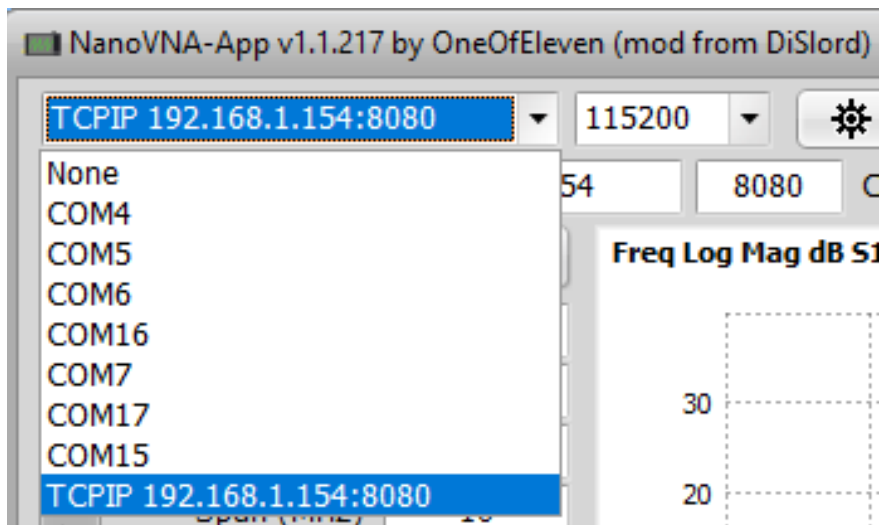
:



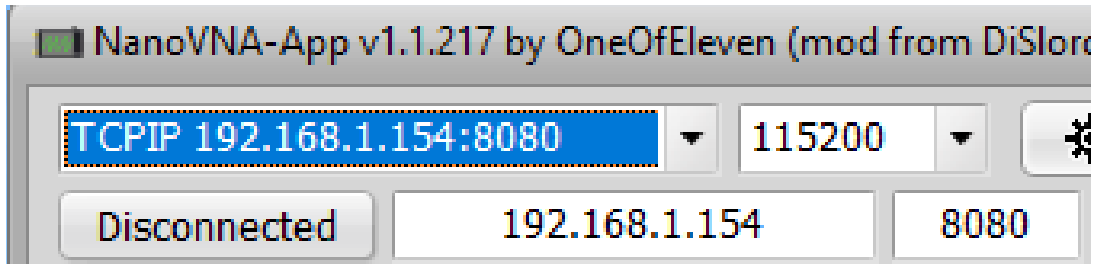
Now to make the final connection. Launch NanoVNA-App on your PC. This assumes your PC is connected to the same network as your Cell Phone. In the upper left is the place you enter the IP info so that you can connect to the Nano/Tiny SA



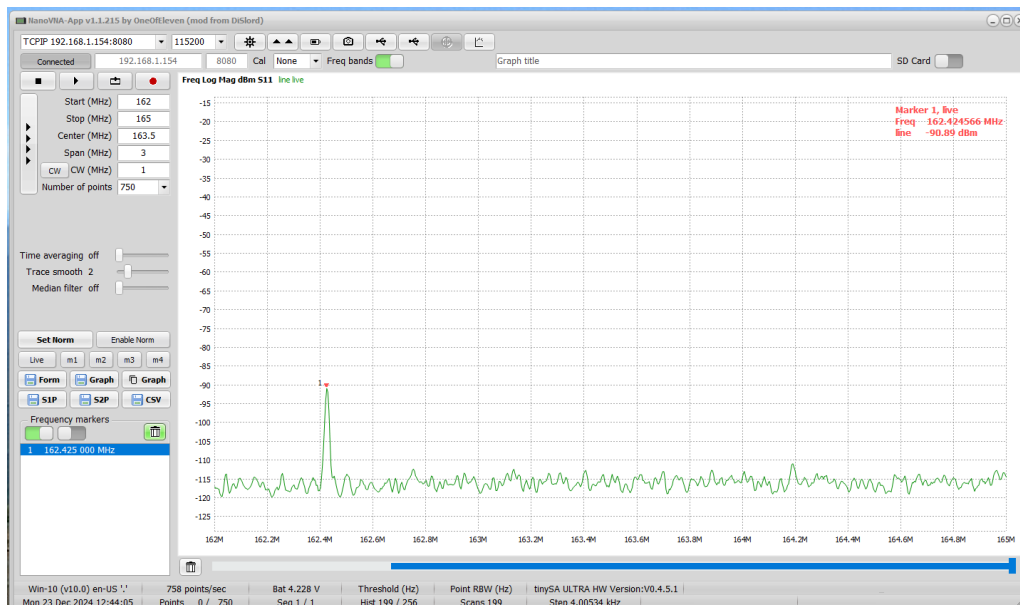
The red outlined section is where you enter the IP address and port number in TCPUART. Pop Quiz! Did you remember the IP address from before? Now that you have entered that info, you click on the connection drop down and select that TCPIP address:port.



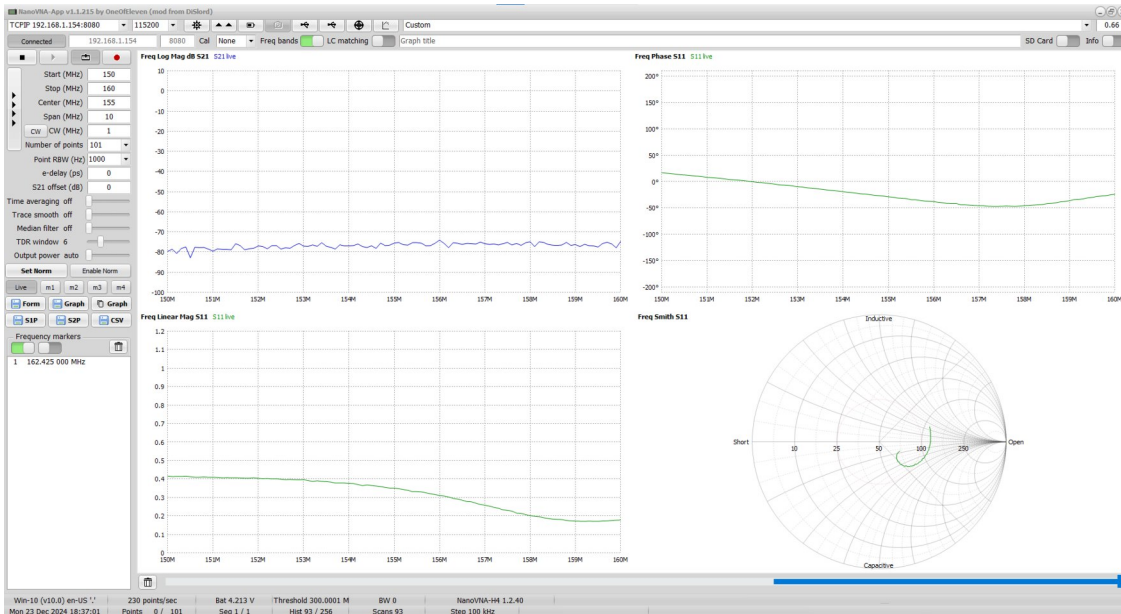
Finally, you press the 'Disconnected' button and you should be connected to your device. If you are, the button will change to 'Connected'. That's all there is to it.



Here are a couple of images. The first is my TinySA Ultra. The carrier is NOAA Weather Radio on 162.425 MHz on Burke Mountain which is LOS from my house.



The next image is with the NanoVNA-H 4. It has just a whip antenna on the floor connected to it.



There is one comment about TCPUIART. When you close it, parts are still running in the background so you might want to force stop it as it's resource hungry. (it uses a lot of battery)

Enjoy!

Remember: "And in the end, the gains we make are equal to the brains we bake"

Polo shirts and Hats embroidered with Club Logo
Please contact Don W1FKF
donw1kf-news@yahoo.com

Brim Hat \$24

K500P Port Authority® Silk Touch™ Polo with Pocket **\$28**
Adult Sizes: XS-6XL

C813 Port Authority® Flexfit® Cotton Twill Cap **\$19**
Adult Sizes: S/M, L/XL
Color selected: Stone

A Few Left over Hats and Shirts
Pick up at conference

Tip of the Month

Have a simple tip or technique that you can share? Send a short description and maybe a cellphone picture to the **NEWSletter** to share it with members.

Smart Tweezers – W1GHZ

If you do any surface mount work, or just regular PC boards, you will find Smart Tweezers handy for component measurements. They automatically recognize and measure resistors, capacitors, conductors, and diodes. In many cases, they will often work with components in circuit.

I had a pair of the original Smart Tweezers brand, but they died recently and I realized how much I relied on them. They are still pretty expensive but there are several more affordable ones on Amazon and eBay. The ones pictured are about 15% of the price and work just as well – in fact, they work better for very small capacitance values if set to C rather than AUTO. I find them great for finding the right part after I drop it on the workbench, or take a strip out of the bag and forget which bag it came from.

LCR-ST1

LCR/ESR METER (SMART TWEEZERS)

0.3V/0.6V RMS TEST LEVELS

100/1K/10KHZ TEST FREQS

D/Q/X/Z VALUE & ESR



Alternatives to using a web browser for Ping Jockey & ON4KST

Mike, N1JEZ

n1jez73@gmail.com

For those of us that use a web browser to access either Ping Jockey or ON4KST, we usually end up typing a lot rather than running the radio and then there is the annoying feature in Ping Jockey where the page will refresh and what you were typing goes away.

There are two alternatives I use instead of a web browser that have some real benefits.

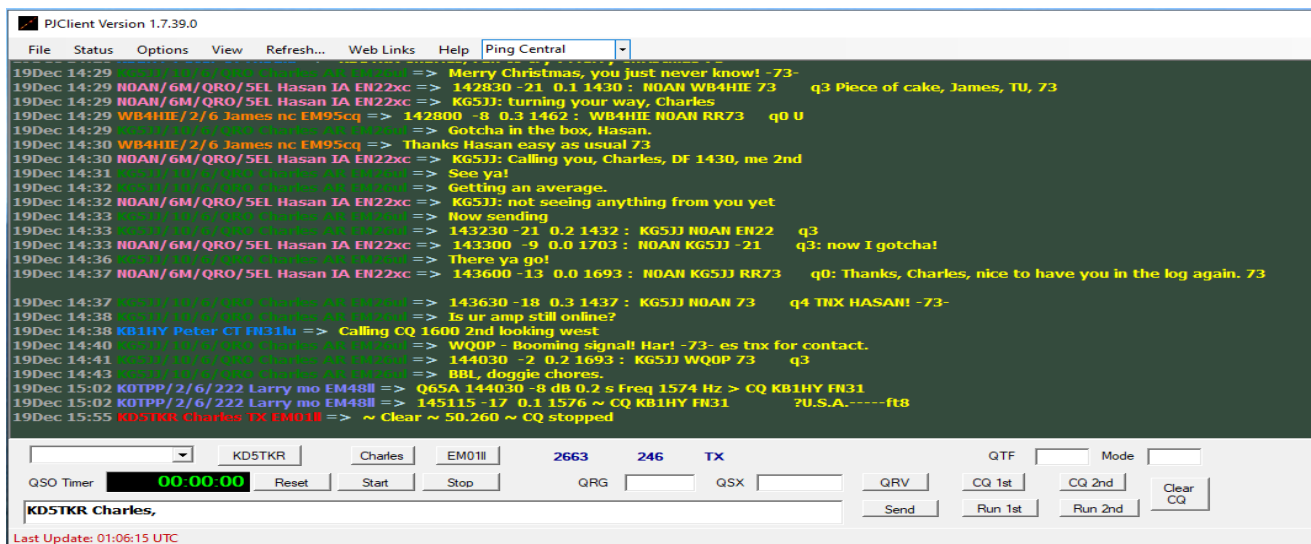
PJClient

The first is for use with Ping Jockey. It is called Client from Tom, N5TM. It is available here:

https://github.com/dbn5tm/PJClient_Scraper/tree/master/PJClient/..publish

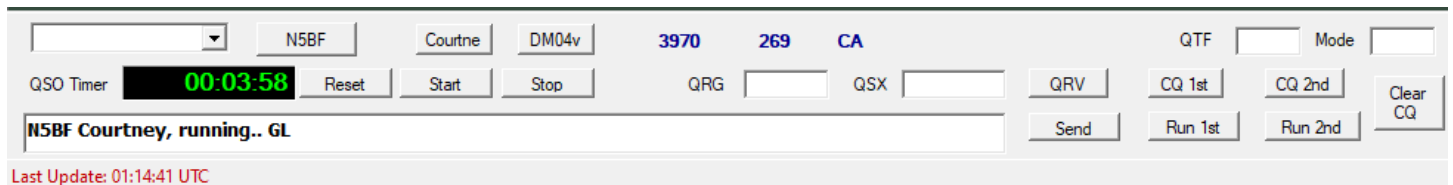
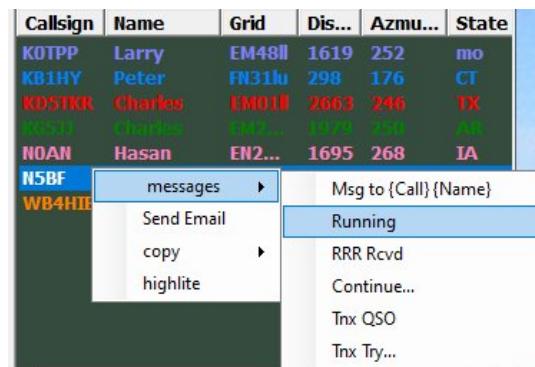
The current version is 1.7.39.0 This client links to the N0UK page but presents the data in, what I consider to be, a better format. Plus, when the N0UK page refreshes, the message you were typing is not lost.

One of the nice features for me is that it groups conversations together by color (user defined) so they are easier to follow. Here's a screen shot to illustrate it.

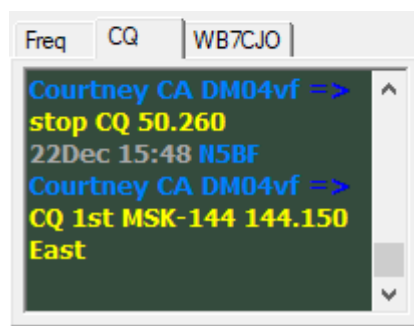


Another nice feature is the options in the call sign box to the far right. Here you can right click on a call sign and it brings up a box with several commonly used messages.

In the message box below, you can see that there is a call sign and name and then the 'running.. GL' message. You do this by right clicking on a call sign and select 'Running'. PJClient will automatically add call sign and name.



In the lower right corner, there is an area where you can enter your CQ info so folks will know what you're up to.



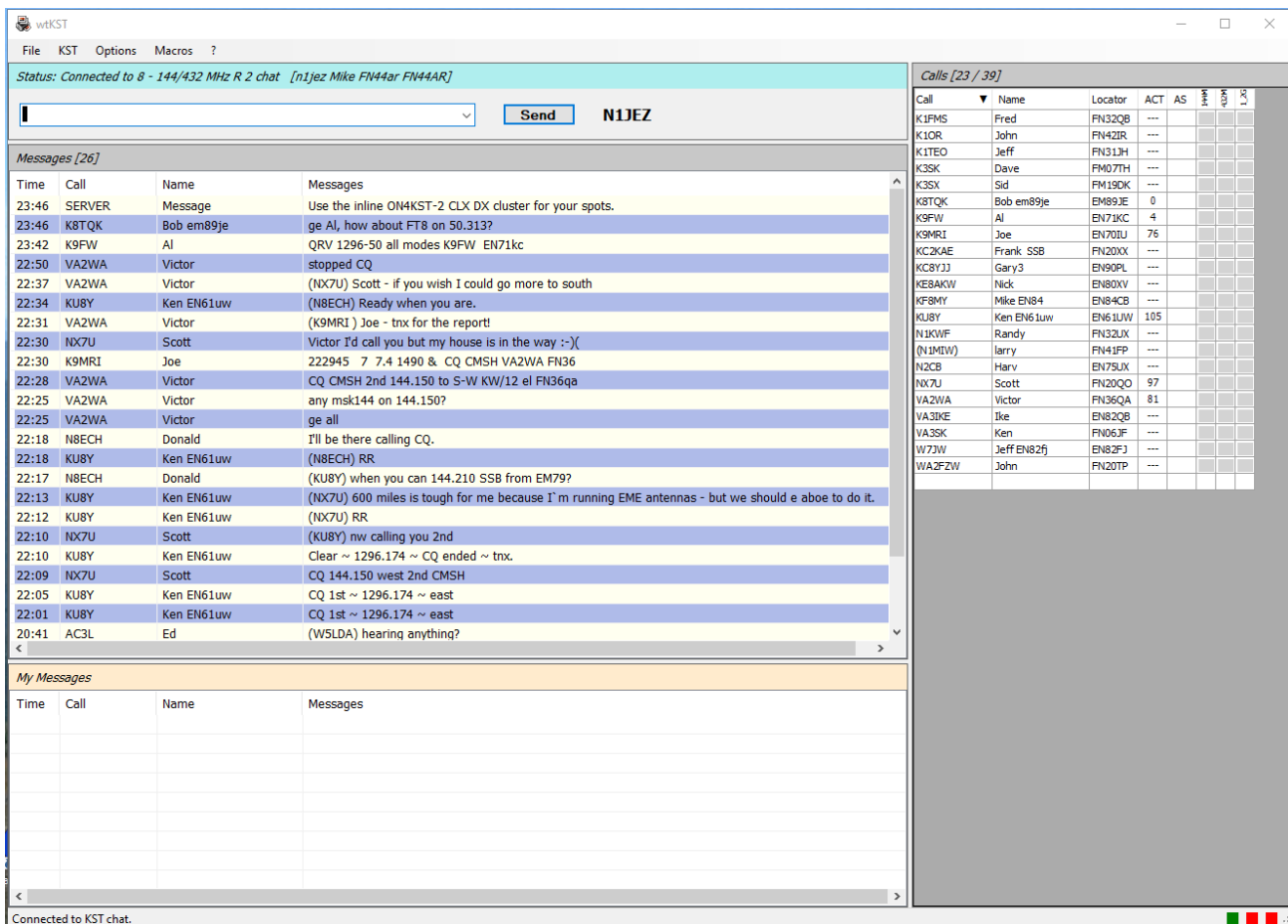
There are other features. I have yet to find a 'quick start guide' so you might have to experiment a bit. This program also supports the EME pages at the site.

wtKST

The second program is wtKST from Frank, DL2ALF and Alexander, DL8AAU. This is for use on the ON4KST page. The current version is 3.2.1.1 It is available here:

<https://github.com/dl8aau/wtkst/releases/tag/v3.2.1.1>

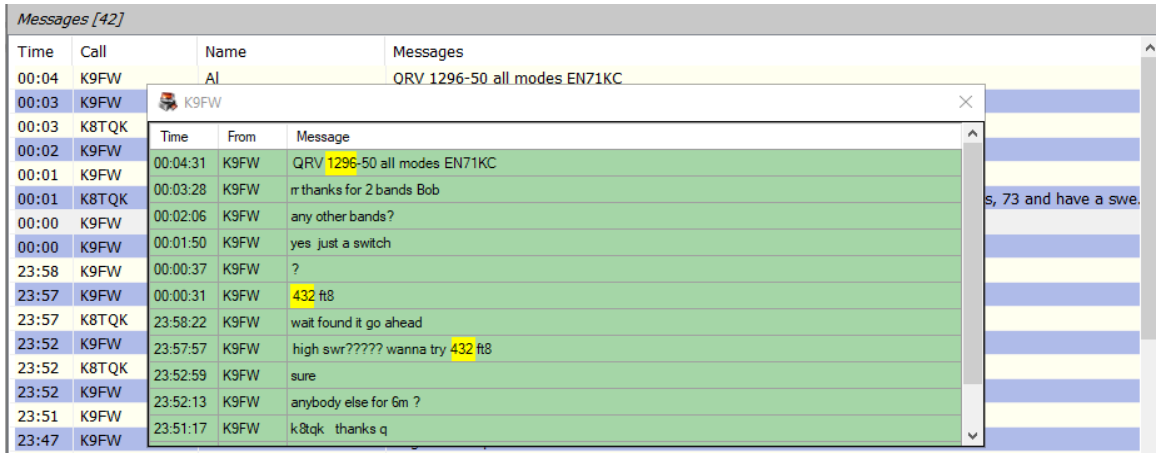
It is similar to PJClient in that it uses data from ON4KST but presents it in a different way.



It looks similar to the web page with the addition of many features. For instance, the bottom 'My Messages' window will grab all the messages with your call sign in it. It filters out a lot of noise from the upper 'Messages' window.

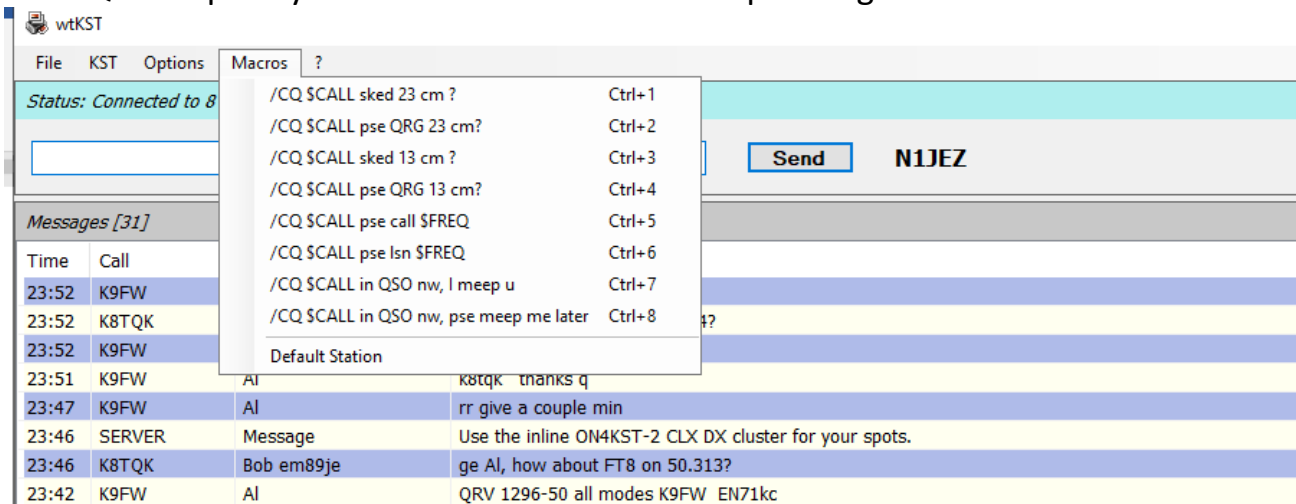
In the upper 'Messages' window, if you left click on a call sign, it will insert /CQ <Callsign> in the text window on top. If you right click on a call sign (or just the line), it will give you beam heading and distance.

One of the more powerful features is a right click on a call sign in the main window, and then select 'Chat Review' and it will list all of that stations' messages.



In the 'Calls' area, you can get beam headings and distance by hovering over a call sign. If you double click, it will put /CQ <call sign> in the message line. Then you can type your message or use the 'Macro' function.

Here is a listing of the default 'Macros'. These macros are customizable so you could have a specific QSY frequency or have another with CW sequencing that we often do.



Another feature in the 'Calls' area is the ability to sort Calls alphabetically or if you click on 'Locator', it will sort calls by the grid of stations that are on similar beam headings from you. The small black triangle in the heading shows which column is sorted.

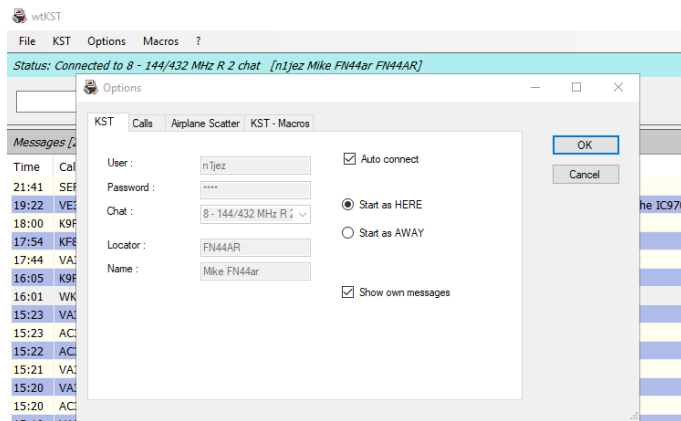
Calls [29 / 47]							
Call	Name	Locator	ACT	AS	MM	43P	L 36
K1FMS	Fred	FN32QB	---				
K1MAP	Mark FM14lux	FM14UX	---				
K1OR	John	FN42IR	---				
K1TEO	Jeff	FN31JH	---				
K3SWZ	Glenn	FN10NE	---				
K3SX	Sid	FM19DK	---				
K8TQK	Bob em89je	EM89JE	---				
K9MRI	Joe	EN70IU	---				
KC2KAE	Frank SSB	FN20XX	---				
KC8YJJ	Gary3	EN90PL	8				
KE8AKW	Nick	EN80XV	---				
KJ8Y	Ken EN61uw	EN61UW	---				
N1KWF	Randy	FN32UX	---				
(N1MIW)	larry	FN41FP	---				
N1YCQ	WHEAT	FN41LP	---				
N2CB	Harv	EN75UX	---				
N8LRG	Phil	EN80VI	14				
NZ3M	Dave	FN10PD	---				
UT1FG/MM	Yuri	FO60SD	0				
VA2WA	Victor	FN36QA	---				
VA3IKE	Ike	EN82QB	0				
VA3SK	Ken	FN06JF	---				
VE3CIQ	Phil fn15wc	FN15WC	---				
W1VD	Jay	FN31LS	4				
W7JW	Jeff EN82fj	EN82FJ	---				
WA1RKS	ELLIS	FN32IN	10				
WA2FZW	John	FN20TP	---				
WZ1V	Ron	FN31RH	---				

Calls sorted alphabetically

Calls [29 / 47]							
Call	Name	Locator	ACT	AS	MM	43P	L 36
UT1FG/MM	Yuri	FO60SD	1				
K1OR	John	FN42IR	---				
N1YCQ	WHEAT	FN41LP	---				
(N1MIW)	larry	FN41FP	---				
N1KWF	Randy	FN32UX	---				
WZ1V	Ron	FN31RH	---				
K1FMS	Fred	FN32QB	---				
K1TEO	Jeff	FN31JH	---				
W1VD	Jay	FN31LS	7				
K1MAP	Mark FM14lux	FM14UX	---				
KC2KAE	Frank SSB	FN20XX	---				
WA1RKS	ELLIS	FN32IN	12				
WA2FZW	John	FN20TP	---				
NZ3M	Dave	FN10PD	---				
K3SWZ	Glenn	FN10NE	---				
K3SX	Sid	FM19DK	---				
KC8YJJ	Gary3	EN90PL	10				
K8TQK	Bob em89je	EM89JE	---				
N8LRG	Phil	EN80VI	16				
KE8AKW	Nick	EN80XV	---				
K9MRI	Joe	EN70IU	---				
VA3IKE	Ike	EN82QB	3				
W7JW	Jeff EN82fj	EN82FJ	---				
KJ8Y	Ken EN61uw	EN61UW	---				
VE3CIQ	Phil fn15wc	FN15WC	---				
N2CB	Harv	EN75UX	---				
VA3SK	Ken	FN06JF	---				
VA2WA	Victor	FN36QA	---				

Locator sorted by similar beam heading

When you first start the program, you will want to go to the 'Options' dropdown. Here you will configure the program to connect to ON4KST. This is also where you customize the Macros.



There are more features, but like PJClient, there is not a lot of documentation. Try hovering over areas and don't forget to try a right click. You might be surprised at what you find.

GETTING ON 222 MHz?

Chris WB2VVV

1. If so, please see the **January 1995 QST** for the article I wrote about modifying a Uniden HR-2510 all mode 10 meter transceiver for use with a 222 MHz transverter. Many other HF rigs can be modified in the same manner to get on this great band with a transverter. Now is always a good time to marry up an older lower value HF rig with a 222 transverter!

2. If you are looking for a modest size inexpensive Yagi-Uda Beam Antenna for 222 - 225 MHz you might want to try out the **VHF Hi Band TV Antenna #30-2475 from Stellar Labs** (I have no relationship with Stellar Labs and I am not selling this antenna): Cost: \$41 shipped from Amazon in a 36" long box, and even less from Newark Electronics. Boom Length: 5 feet assembled (breaks down in half via wing nuts to 29" and 32" sections).

Measured Gain (on my Antenna Test Range): 7.67 dB (9.82 d Bi). Measured 3dB Horizontal Beam width: 54 degrees.

Measured Return Loss at 222.1 MHz: 11.63 dB (the equivalent of 1.7:1 SWR).

Measured Front-to-Back Ratio: 20.26 dB.

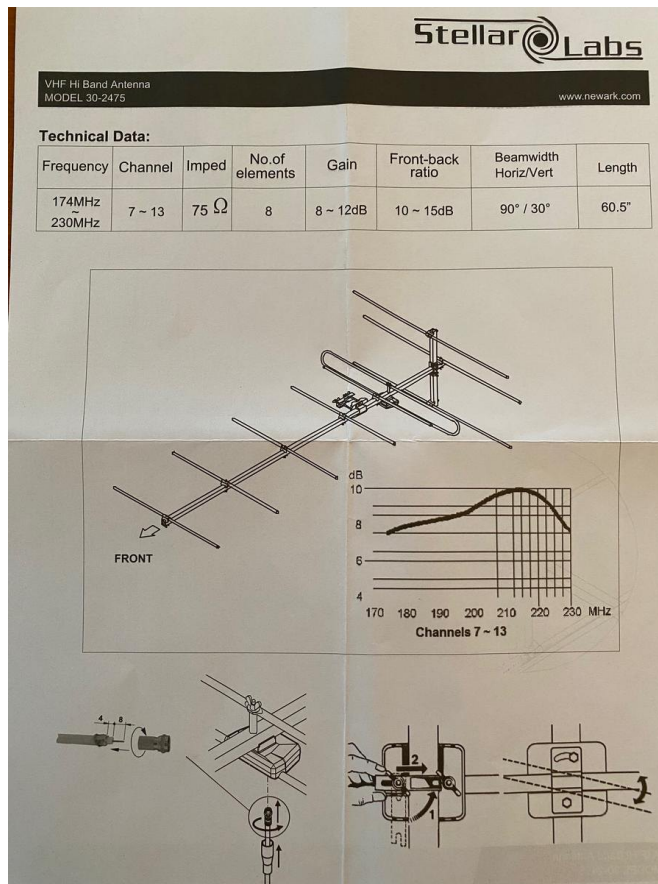
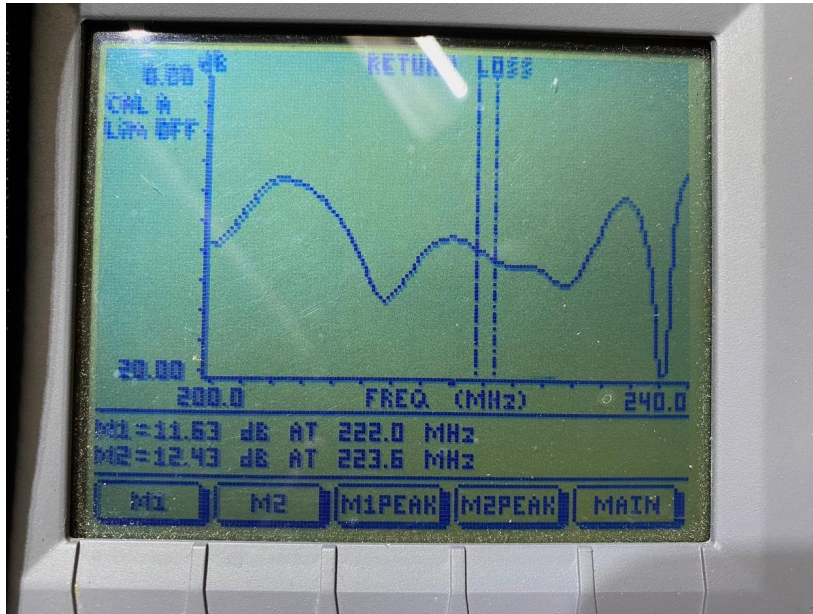
Measured Front-to-Side Ratio: 18.99 dB.

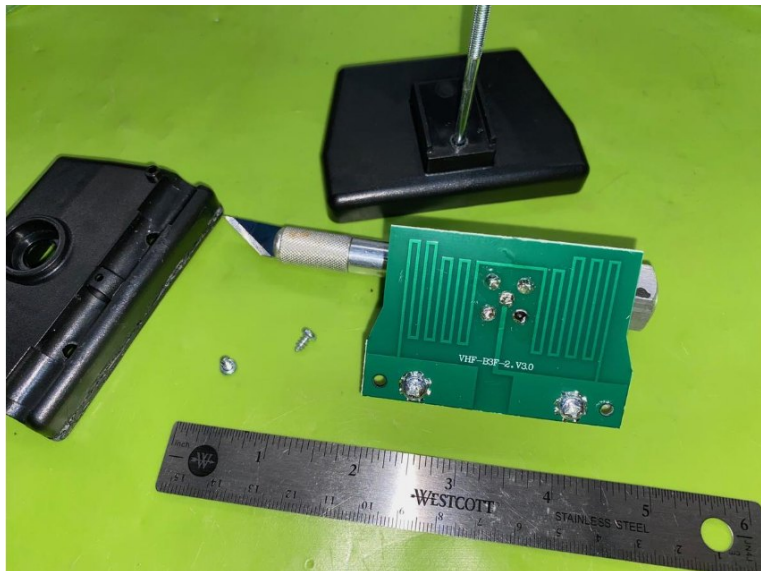
Details: This antenna has a Type F connector feeding a small circuit board inside a black plastic feed point box.

The driven element is a large diameter/spacing folded dipole for broadband 174 - 230 MHz use. The small circuit board has a micro strip hairpin etched on it for matching that looks like it will handle transmitter power kept under 100 Watts.

I used a Type F to UHF coaxial adapter at the feed point for testing, along with a 20' length of GR-58/U Coax terminated in UHF connectors. One could alternatively use 75 ohm GR-6/U (TV type) coaxial cable with F connectors on each end, and adapt to what connector is necessary at the rig end.







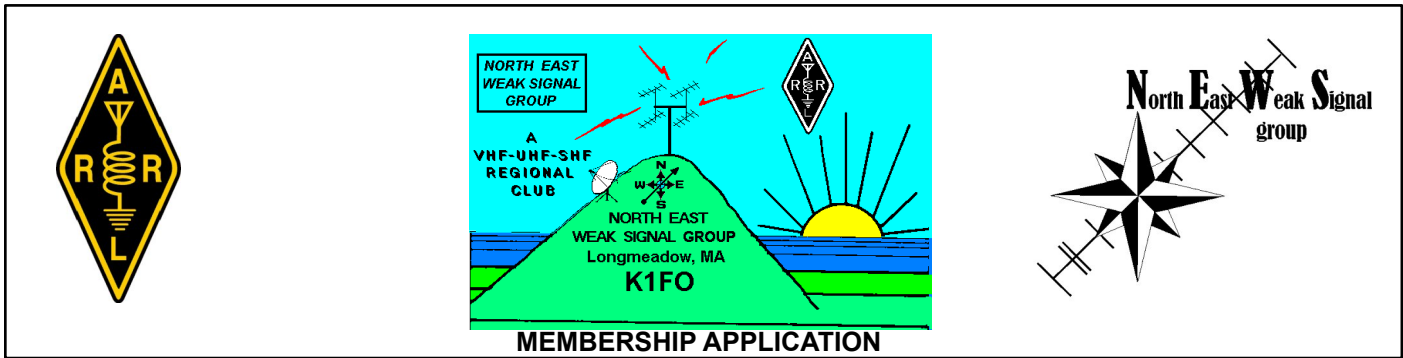
I sincerely hope that easy access to a good performing inexpensive beam antenna helps you get on 222 MHz!

73, Chris WB2VVV wb2vvv@aol.com



α ALPHA ANTENNA®





Date: _____

Name: _____

Call sign: _____ Grid: _____

Street: _____

City: _____ State: _____ Zip: ____ - _____

Phone (home) _____ Optional (work) _____ - _____

Email _____

ARR member: Y N

Electronic Newsletter Delivery: Y N

Operational Bands (circle) 50 MHz 144 MHz 222 MHz 432 MHz 903 MHz 1.2 GHz 2.3 GHz
 3.4 GHz 5.6 GHz 10 GHz 24 GHz 47 GHz 76 GHz Light
 Other (list)

The North East Weak Signal [N.E.W.S.] Group was established in 1993 to form a camaraderie among fellow VHF-UHF-Microwave enthusiasts and support a convenient means to exchange technical information. We currently have six meetings per year, 4 are held on at the Storrs Library on Rt. 5 in Longmeadow, Mass., 1 at our annual Conference in April, and 1 at our Annual Picnic in July. We provide a "NEWSLETTER" that is distributed via email two weeks prior to each meeting. Any contributions to this publication are appreciated and can be sent to: Don, W1FKF by e-mail to donw1fkf-news@yahoo.com

Dues are \$10 for 2 years. Please contact or mail application to: NEWS Treasurer, George Collins, KC1V, 105 Ninth District Rd., Somers, CT 06071 or E-mail: news.kc1v@gmail.com

Mail to

News Letter

North East Weak Signal Group

Don Twombly, W1FKF

donw1fkf-news@yahoo.com

**Treasurer
 North East Weak Signal Group**

c/o George Collins
 105 Ninth District Road
 Somers, CT 06071

news.kc1v@gmail.com