

ROCKY MOUNTAIN HIGH

A Microwave Odyssey

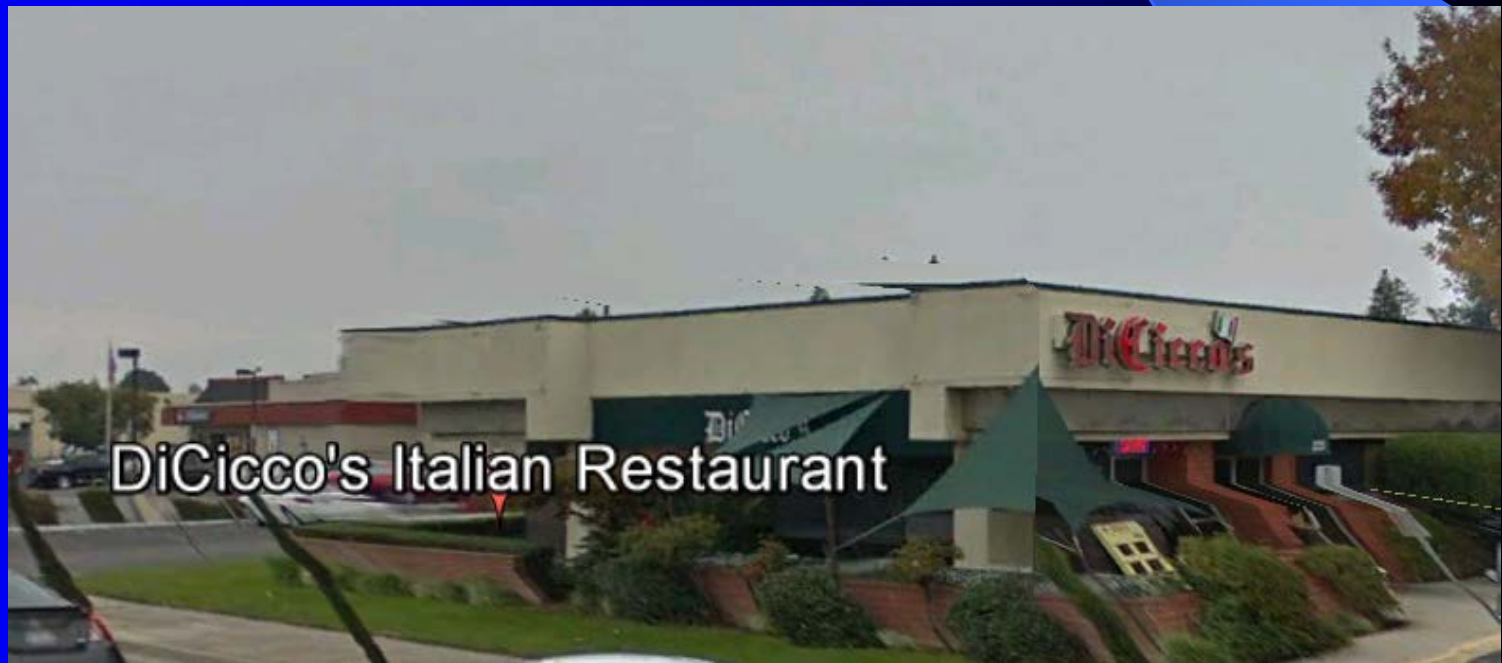
by
Wayne Overbeck, N6NB
www.n6nb.com

An expedition to Colorado for the new 222 and Up Distance Contest

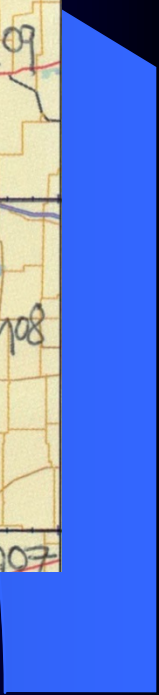
- New contest in 2017 – replaced ARRL UHF Contest
- Scoring: distance in km. times a band factor (1x on 432, 2x on 222 and 1296, 4x on 902, 6x on 2304 and 10G, 10x on 3456 and 5760, 20x on 24G and up)
- Competition by new regions, not ARRL sections or divisions. Colorado, Wyoming and Utah are one of 18 regions

Colorado adventure planning...

This entire project was planned over dinner in Fresno in late June, 2017 by W6TE, K6MI and N6NB. When N6EY said later that his family could join us in Denver, that gave us the critical mass for a hoped-for competitive entry in the new 222 and Up Distance Contest.



DiCicco's Italian Restaurant

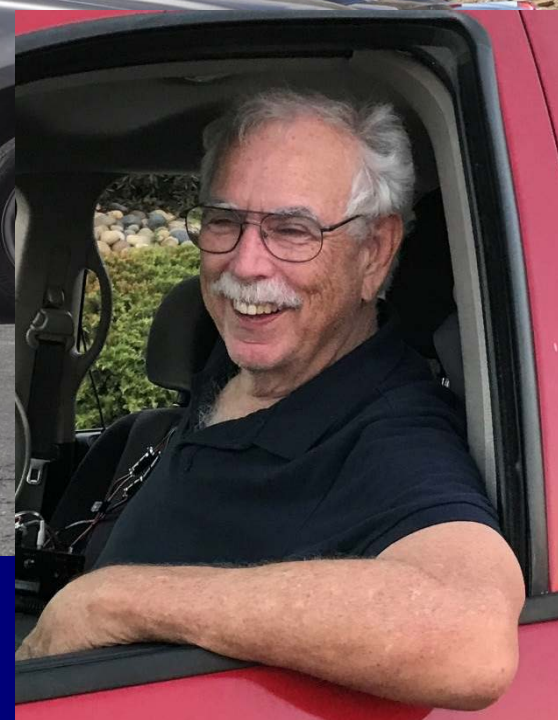


The background is a solid blue color. A thin, light blue curved line starts from the top left and arcs towards the right. A larger, darker blue triangular shape is positioned on the right side, pointing towards the center.

Operators and stations...



W6TE in N6NB's F150
on Mt. Evans, Colorado





K6MI in N6NB's
Ford E350 van
On Mt. Evans



WB6ITM, K6MI and K6MI's wife Mary.



N6KYS, N6KLO and N6EY with rental car
station previously used by KH6/N6NB



N6NB's minivan and trailer at Denver hotel

Equipment lineup

W6TE: 100 watts on 222 and 432, 60 watts on 902, 50 watts on 1296, 20 watts each on 2304, 3456, 5760 and 10368 MHz.

K6MI: 100 watts on 222 and 432, 60 watts on 902, 50 watts on 1296, 10-20 watts on all higher bands through 10 GHz, 300 mw. on 24 GHz.

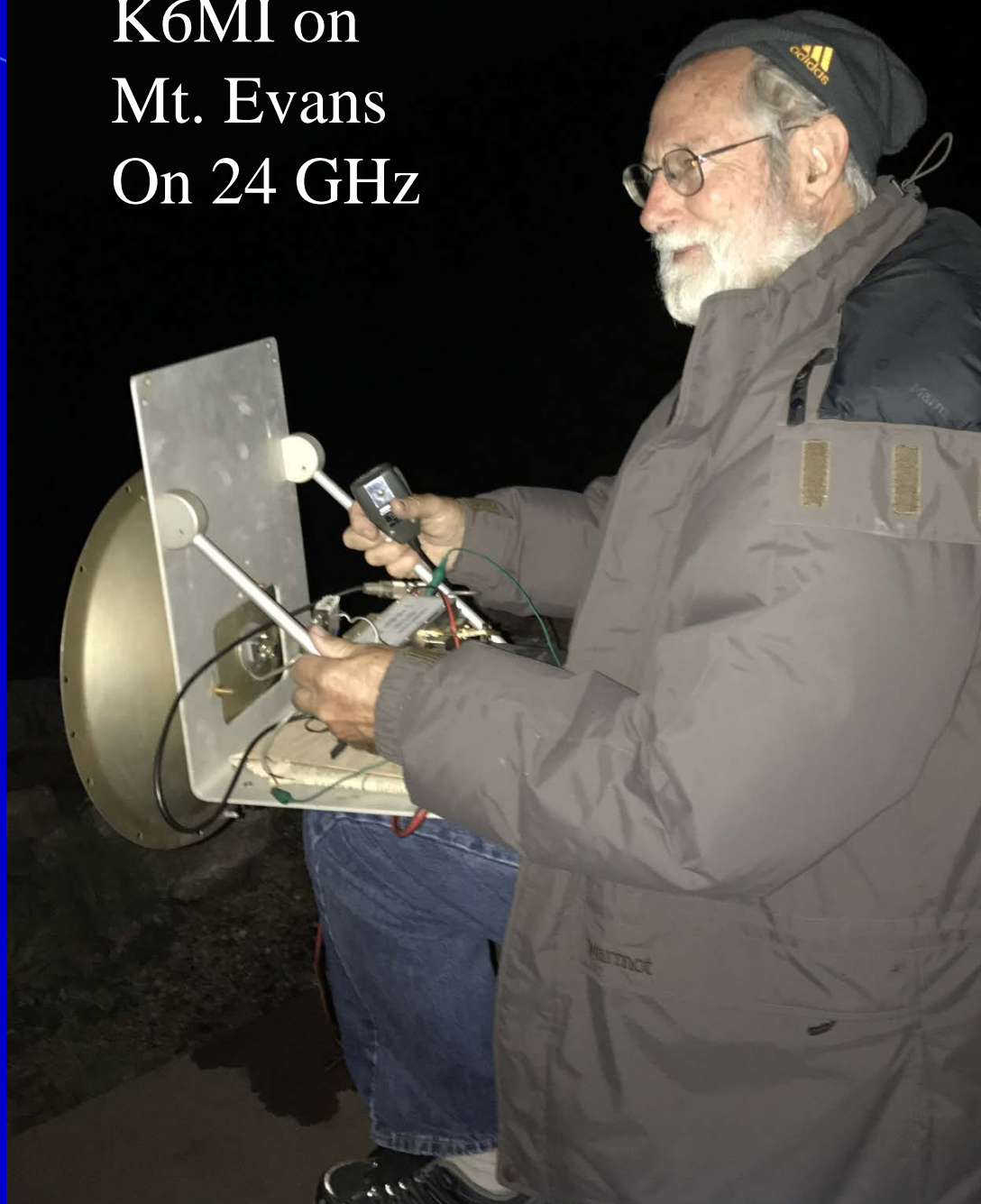
N6EY group: 25 watts on 222, 50 watts on 432, 60 watts on 902, 50 watts on 1296, 30 watts on all higher bands through 10 GHz, 3 watts on 24 GHz.

N6NB: 120 watts on 222, 110 watts on 432, 60 watts on 902, 50 watts on 1296, 10-20 watts on all higher bands through 10 GHz, 3 watts on 24 GHz.



N6NB's 24
GHz station

K6MI on
Mt. Evans
On 24 GHz





Jason with the rentacar station...



Kaylie operating and logging



N6EY and daughter N6KLO sightseeing...



Lofty Mt. Sunflower, highest point in Kansas



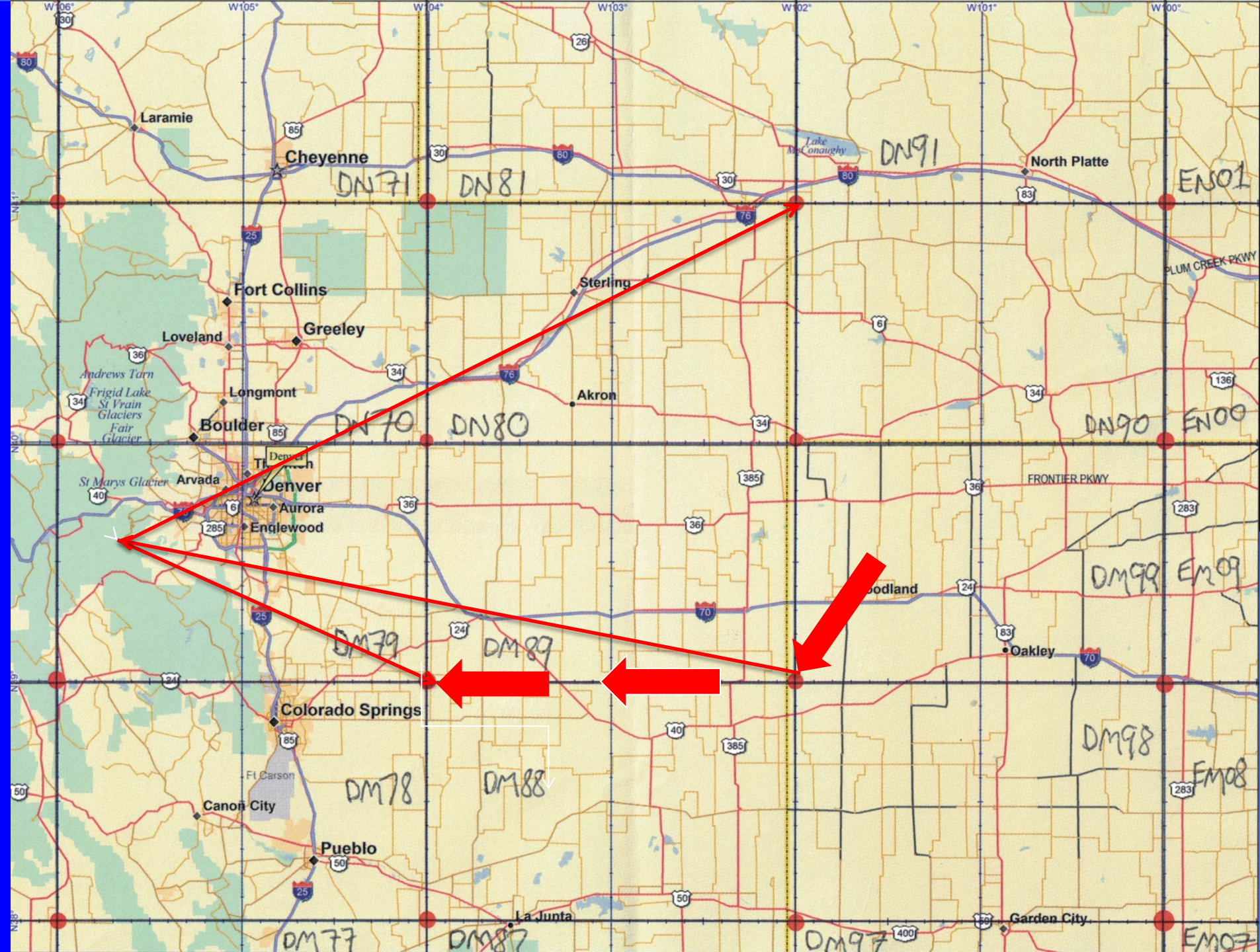
N6NB/R at Mt. Sunflower



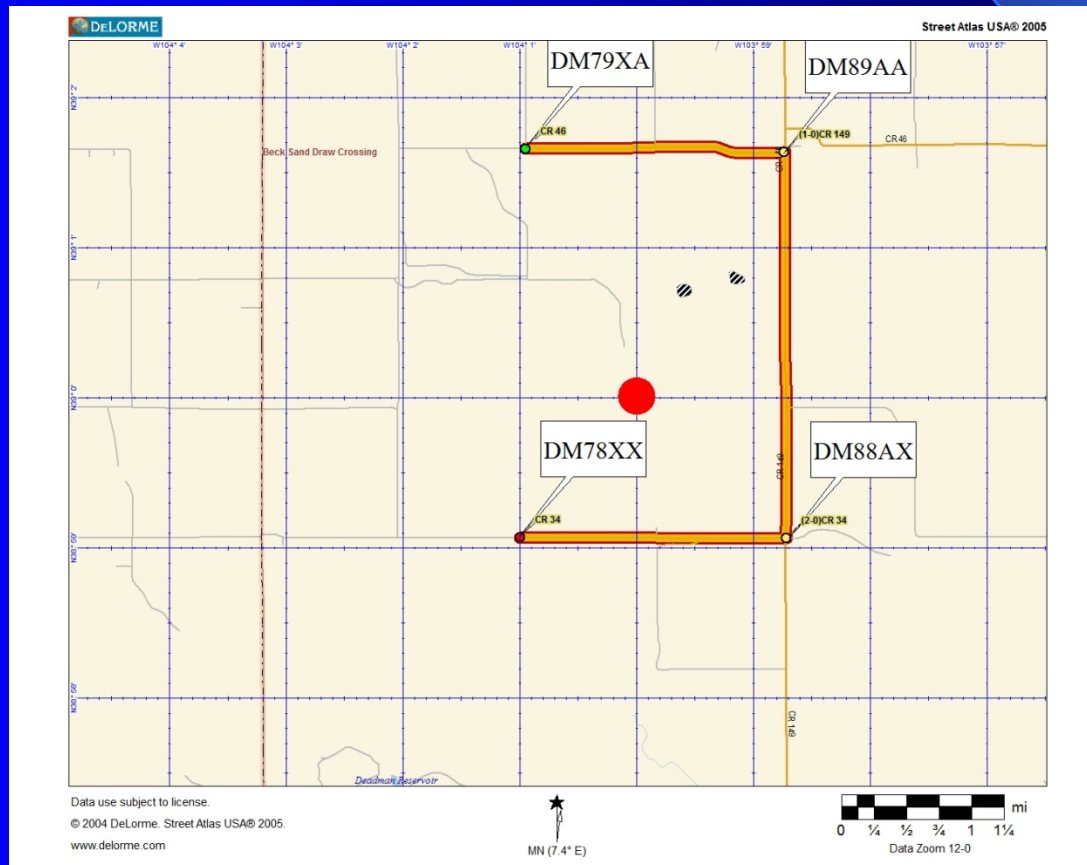
“Mountaintopping” in Kansas...

WEAK signals in Kansas!

- W0TTT two-meter beacon in Rockies near Denver was barely out of the noise. (Compare: N6NB Tehachapi beacon is S9+10 dB in Madera at about the same distance and elevation difference.)
- W6TE and K6MI on Mt. Evans were in the noise on 222 FM, while N6EY group was workable at S3 with deep fading. Heavy rain made signals fluttery and distorted as well as weak.
- Nobody but a nearby neighbor was loud at Mt. Sunflower!
- It was time to find a plan B—on the fly.



Operating in tornado country: one night at one four-grid convergence near Limon, Colorado.



N6NB/R facing
a violent
Colorado storm
(get tower down
in a hurry)



Murphy's Law at 3.4 GHz: a 37,000-point broken SMA



Results of August, 2117 UHF Distance Contest

- Despite a complete change of route during the contest and despite a crucial component failure, the scores were okay--but not at all what we'd hoped.
- N6NB/R had the highest rover score overall with 115,550 points. If 3.4 GHz had been working, that score would have been over 150,000.
- With even one more four-grid convergence, the score could have doubled to about 300,000.

Maybe next time???

The N6NB website



www.n6nb.com