

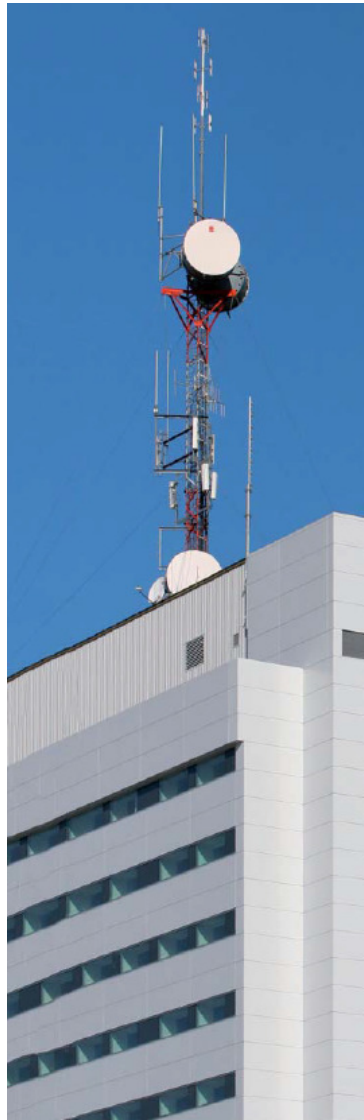
THE MICROWAVE DISH HOW IT'S MADE

Jim Savage N1ZN
Manufacturing Engineer
Radio Frequency Systems
Meriden, CT

How do we get from this:



To this:



Okay -
We won't be
putting it up onto
the tower.



Proprietary Note: The information contained in this document is considered to be confidential material proprietary to Radio Frequency Systems and is solely for information purposes. The information shall not be used by anyone other than Radio Frequency Systems to design or construct any of the items depicted, nor shall it be disclosed, duplicated, or copied for any purpose, nor made available to any third party without the prior written consent of a Radio Frequency Systems official.

The Process

Step 1: Cut the aluminum blank

Step 2: Spin the Dish

Step 3: Machine & Assemble

Step 4: Paint

Aluminum Blank

Starts out as aluminum sheets:



Sheets are lifted using a vacuum hoist.

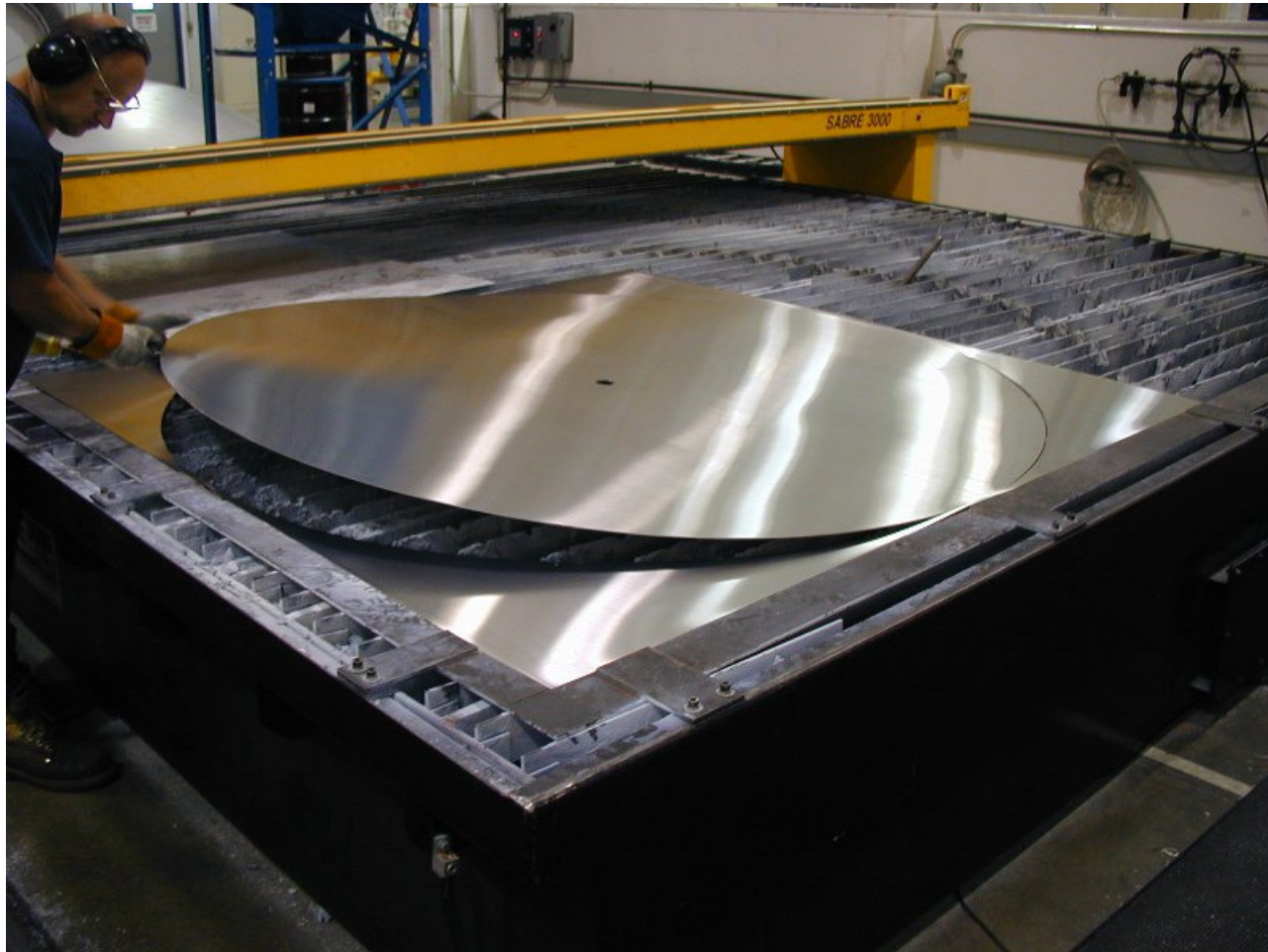
Sheet is placed on the torch cutting table.



Sheet is torch cut into a circle:



Circular Blank



Spinning the Dish

The Spinning Machine



Forms Used for Spinning



More Forms – Up to 12ft. Dia.



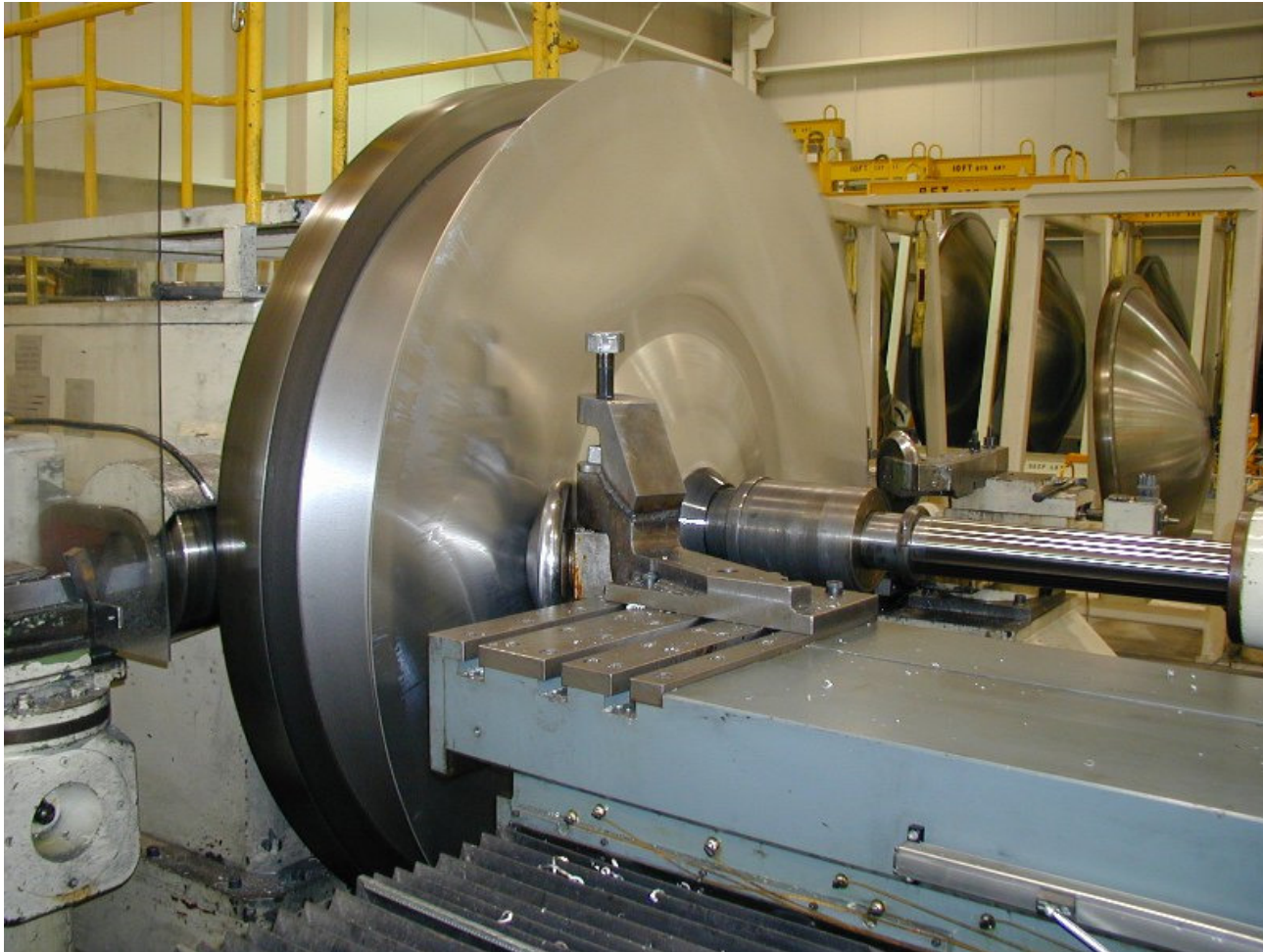
Blank is loaded into the spinning machine.



Blank in place.



Spinning the Dish



Completed Dish



Gaging



Machining

CNC Drilling Machine



Drilling holes for assembly



Assembly



Back ring will be riveted to the dish.

Assembled Dish



Dishes in Process



Painting Powder Coat

Painting Process

1. Wash
2. Dry
3. Powder Coat
4. Bake

Dish Loaded onto Monorail



Entering the Wash Booth



Wash



Powder Coat



Bake



Finished Dish





Crating for Shipment



Thank You

'73 N1ZN