

ExpressPCB

- NEWS / MidAtlantic VHF Conference
- Phil Theis K3TUF
- Paul Wade W1GHZ
- October 13, 2012

Step 1

Download ExpressPCB

> Start by downloading our free CAD software. It includes ExpressSCH for drawing schematics and ExpressPCB for circuit board layout. The software is easily installed, and a snap to learn and use. Both run with Windows XP through Windows 7.

(Should you choose not to keep our software on your system, simply uninstall it using Add or Remove Programs found in your computer's Control Panel.)

Step 2

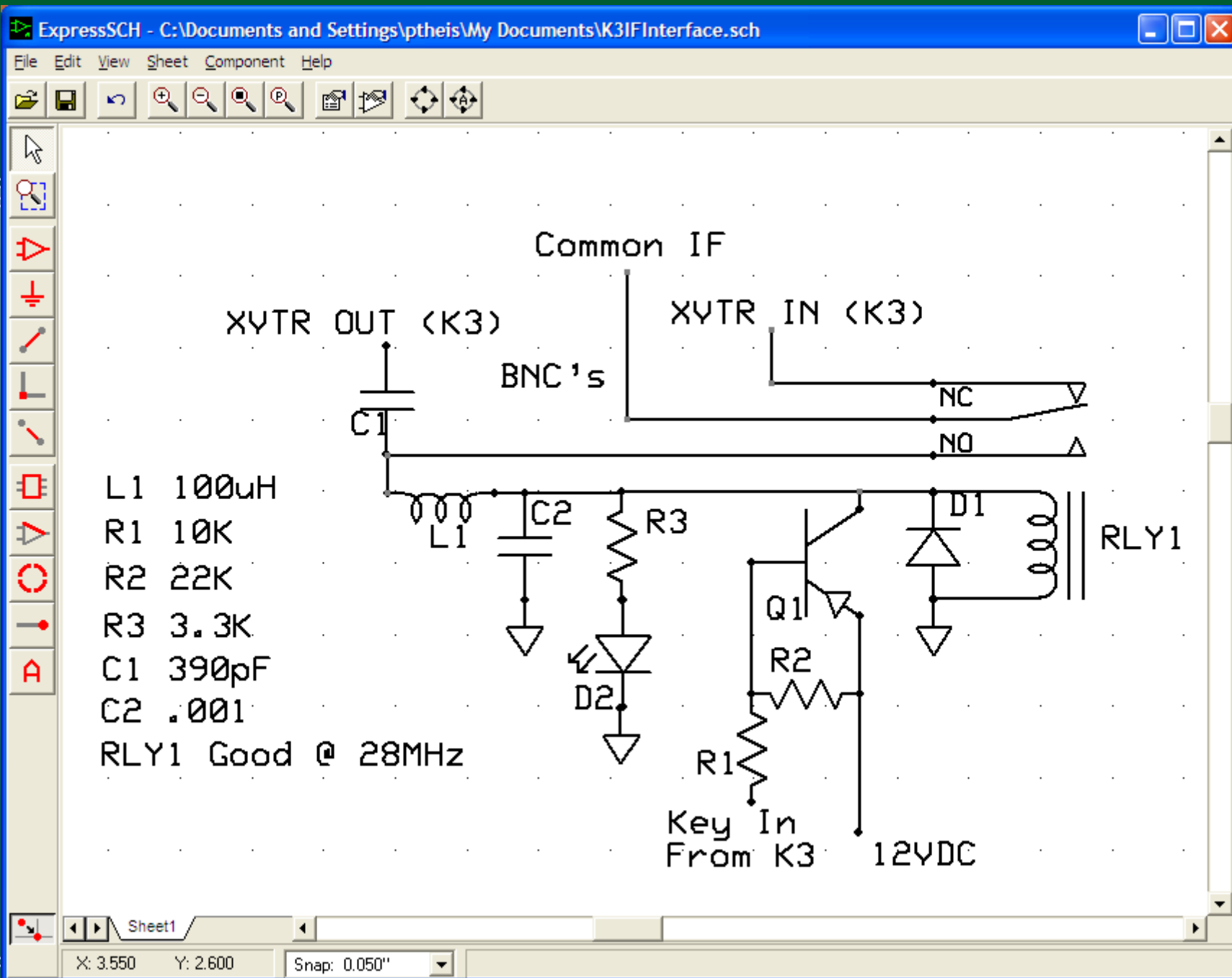
Draw a Schematic

> We recommend that you begin your project by drawing a schematic. While not required, it will save you time when designing your PCB.

Drawing a schematic with the ExpressSCH program is as easy as placing the components on the page and wiring the pins together.

The schematic can then be linked to your PCB file, so that the PCB knows what needs to be connected together.

Learn more about ExpressSCH



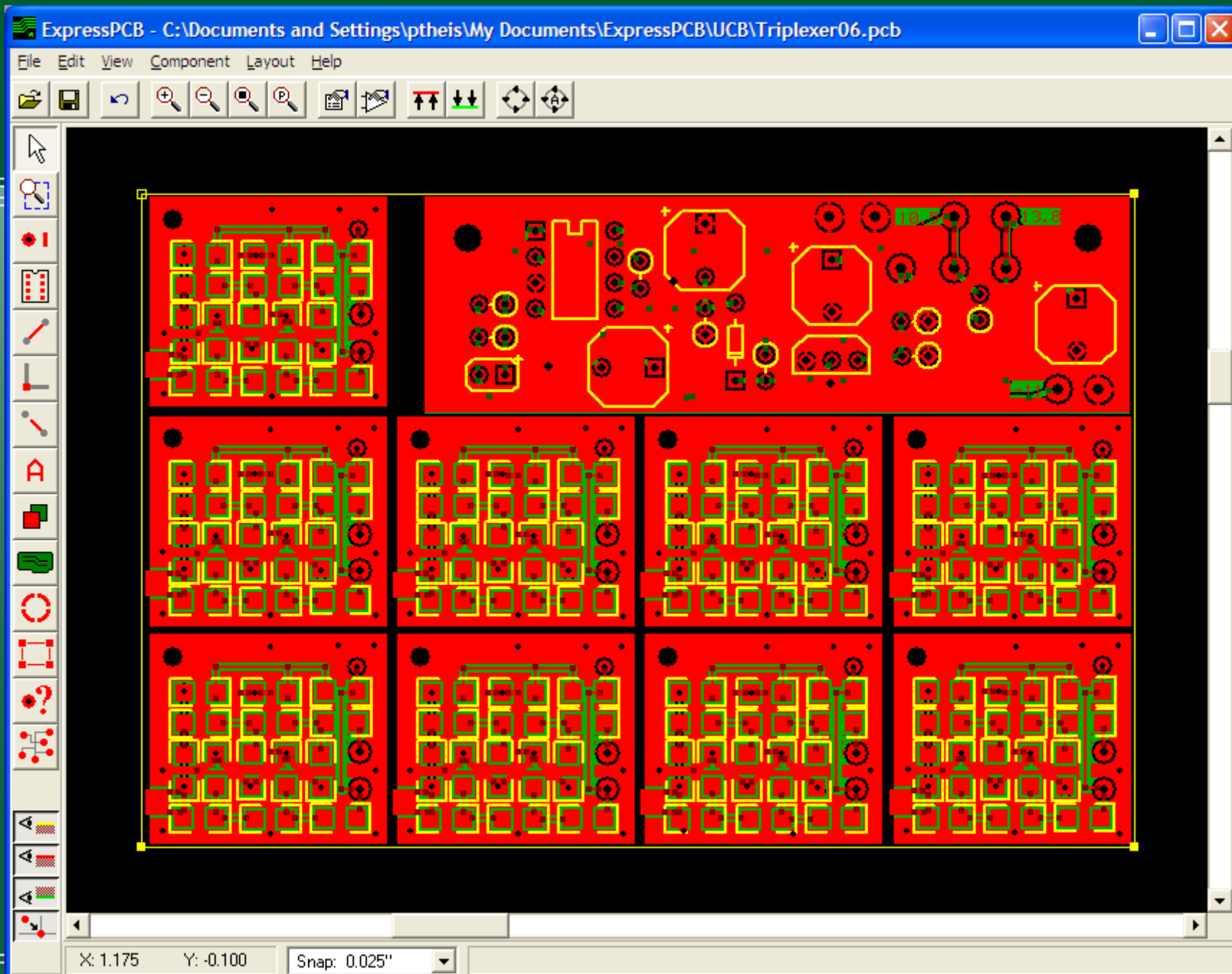
Step 3

Design the PC Board

> Designing 2 or 4 layer boards using the ExpressPCB program is very simple. Start by inserting the component footprints, then drag them into position. Next, connect the pins by drawing the traces.

If you link your schematic file to the PCB, the ExpressPCB program will highlight the pins that should be wired together in blue.

Learn more about ExpressPCB



Step 4

Instant Quotes

> After completing your layout, you can determine how much it will cost and how long it will take to have your boards made.

The ExpressPCB program displays the exact manufacturing cost by selecting the Compute Board Cost command from the Layout menu.

Learn more about board pricing

Compute Board Manufacturing Costs...

Select a 2 or 4 layer board manufacturing service:



☒ 2 Layer Boards

Two layer boards work well for most simple applications. They are less expensive and take fewer days to manufacture than four layer boards.

☐ 4 Layer Boards

Four layer boards offer better noise immunity, can be much more compact and are easier to design than two layer boards. Only select "4 Layers" if you are designing your PCB to use the power and ground internal planes.

< Back

Next >

Cancel

Compute Board Manufacturing Costs...

Select a double-sided board manufacturing service:



- ☐ Standard Service
High quality double-sided boards with plated through holes. Silkscreen and solder masks are not included. A great option for small quantities and prototyping.
- ☐ Production Service
Production quality double-sided boards with plated through holes, including solder masks and top layer silkscreen. This is our best value when ordering larger quantities.
- ☐ ProtoPro Service
The same top quality PCBs as our Production Service (solder masks and top layer silkscreen included). The board size must be 21 square inches or smaller. Four boards just \$166.
- ☒ MiniBoard Service
Our least expensive PCB option. These are the same high quality double-sided boards as our Standard or Production services, however the board size must be exactly 3.8" x 2.5".

< Back

Next >

Cancel

Compute Board Manufacturing Costs...

Select a 2-layer MiniBoard type. MiniBoards have a fixed size of 3.8" x 2.5". By standardizing on this size and a quantity of 3, we can offer these boards at a very low price.



☒ MiniBoard

Very high quality double-sided boards without the green soldermask coating or the white component outlines and text.
Three boards just \$51.

☐ MiniBoardPro

The same professional quality boards as our Production service, including the green soldermask and white silkscreen layers.
Three boards just \$75.

< Back

Next >

Cancel

Compute Board Manufacturing Costs...

Please enter the number of boards that you would like to order and how you would like them shipped:



Quantity of boards to order:

Shipping method:

- ☒ Second Day Air (United States only)
- ☐ Next Day Air (United States only)
- ☐ International courier, 2 - 3 days

< Back

Next >

Cancel

Compute Board Manufacturing Costs...

The cost to have these boards manufactured is \$61.80 (US dollars) including shipping.



Press the "Show costs itemized" button to see the costs broken down.

Show costs itemized...

This order will require 1 full business day for manufacturing and 2 business days for shipping. If the order is submitted after 2PM ET, or if submitted Friday afternoon, Saturday or Sunday, then add one additional business day for manufacturing.

< Back

Done

Step 5

Order the Boards

> Now the fun part. You order your PC boards directly from the ExpressPCB layout program. Here is how:

1. Run ExpressPCB and select Order Boards Via The Internet from the Layout menu.
2. In the order form fill in your name, address, email address and the quantity of boards you need.
3. To pay for the boards, we bill your credit card the exact amount shown by the Compute Boards Costs command. But don't worry, we encrypt your credit card number, along with the entire order before it is sent over the Internet.
4. Press the Place Order button to submit your order. It is sent directly to the ExpressPCB server.

Live Demo

- If there is time, we'll go to a live demonstration

